

CROCKETT is...

Industrious. Hard work and innovation are the best tools for building. Since 1973 we have perfected our craft and economized our resources.

Competitive. Inspired, driven and alive. We pursue new paths and boldly step into the market to meet new needs and deliver the greatest value.

Loyal. It takes a long time to build a company and even longer to build good relationships. We listen to your specific needs and join them with our caring and professional team to build your dream.

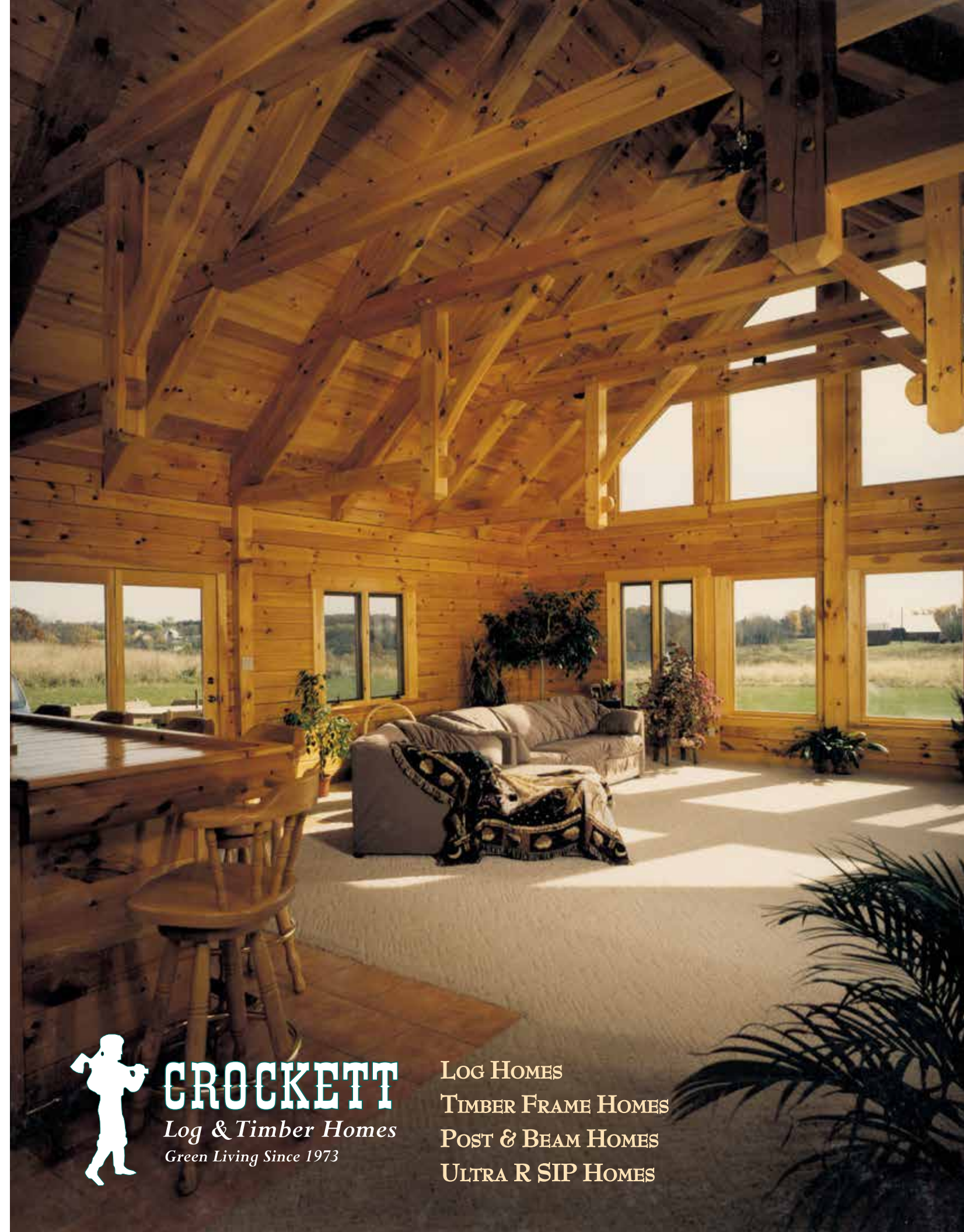
An American Tradition. It is all about being true to who we are and what we do and delivering our best with integrity every time.



BUILD YOUR DREAM WITH US!

Crockett Log & Timber Homes
58 Sunset Drive • Mechanicsburg PA 17050
1-800-566-7714 • www.crockettloghomes.com

© Crockett Log & Timber Homes 2014



CROCKETT
Log & Timber Homes
Green Living Since 1973

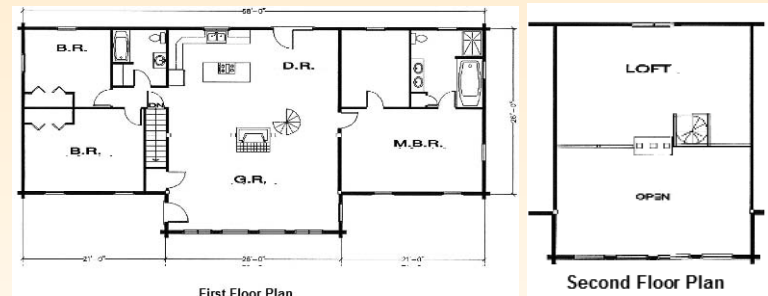
LOG HOMES
TIMBER FRAME HOMES
POST & BEAM HOMES
ULTRA R SIP HOMES



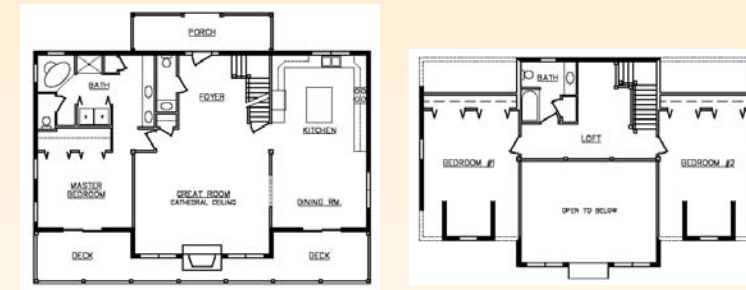
Green Living Since 1973



EAGLES MERE I



Main: 26'x68', Bump Out: 6'x26'
 First Floor: 1,924 Sq. Ft. Second Floor: 416 Sq. Ft.
 Total: 2,340 Sq. Ft.



Main: 28'x52', Bump Out: 4'x22', Decks: 4'x22' and 2-8'x15',
 Porch: 6'x22'
 First Floor: 1,544 Sq. Ft. Second Floor: 1,192 Sq. Ft.
 Total: 2,736 Sq. Ft.



MECHANICSBURG

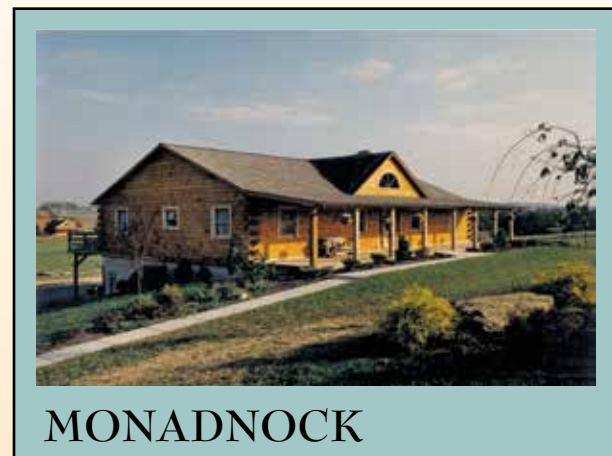
Log Homes are a part of America's historic heritage.

Crockett has played a significant role in the development of the modern log and timber home industry, carrying on the classic traditions of our pioneering forefathers. Crockett is committed to our craft and to our customers and we will continue to produce the highest quality homes in the spirit of American frontiersmen.

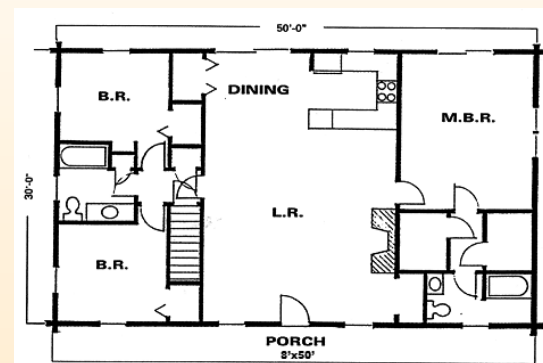
Timber Frames combine old world craftsmanship with the value of today's technology.

Enjoy living in a home that is built with pegs in mortise & tenon joinery enveloped by Ultra R Structural Insulated Panels. Each Frame is a work of art!

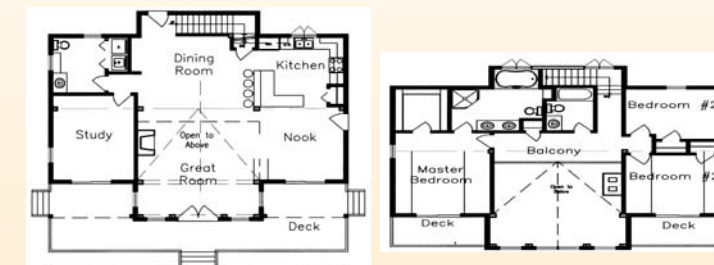
Crockett's Post and Beam Homes are a classic alternative building system for budget conscious homeowners integrating heavy timbers and metal fasteners with SIP's.



MONADNOCK



Main: 30'x50', Porch: 8'x50'
 Total: 1,500 Sq. Ft.



Main: 16'x32', Wings: 2-12'x24', Decks: 2-6'x12', 6'x40' (lower), 2-6'x12' (upper)
 First Floor: 1,088 Sq. Ft. Second Floor: 832 Sq. Ft.
 Total: 1,920 Sq. Ft.



CARLY

Ultra R Homes are an attractive alternative for every lifestyle.

Using both SIP Wall and SIP Roof Systems, Crockett's contemporary and classic designs give you built in economical advantages of Structural Insulated Panels. Benefit from Crockett's 20+ years of SIP experience in this premium technology.

1-800-566-7714

www.crockettloghomes.com